

Generic Commands

When an object is added to the System, a list of all the commands related to this object will be accessible, if applicable. These commands can be used on a generic button, inside the logic module, with the universal gateway, etc.

The commands are grouped into 5 categories:

- **System**
- **Reports and Gateways**
- **Internal Services**
- **Multimedia**
- **Security**

The category will only be visible if the related objects have been added inside the System tab.

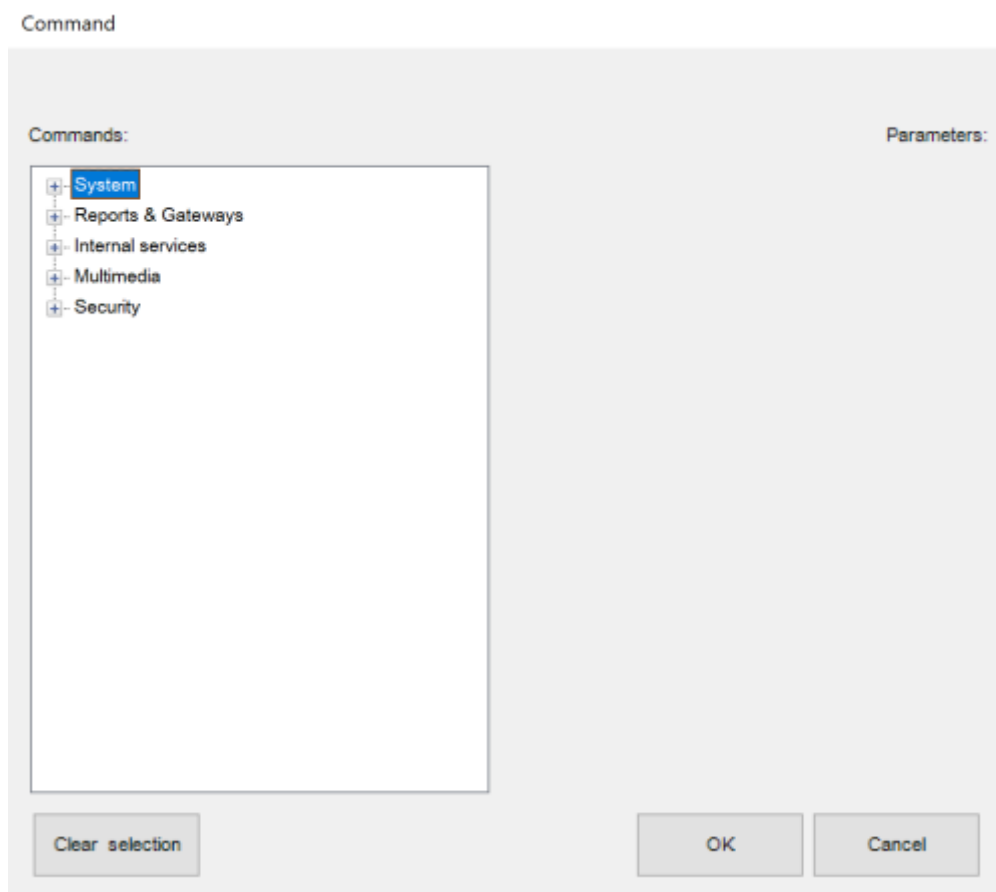


Figure 1: Thinknx Objects Commands

System

The available commands when selecting the **System** category are the following:

Send KNX Bit telegram

This command is used to send a 1 bit value to the KNX bus.

- **KNX Group** Group address to send the value.
- **KNX value** Can be either 1 or 0.

Send KNX Byte Telegram

This command is used to send a 1 byte value to the KNX bus.

- **KNX Group** Group address to send the value.
- **KNX value** Can be a value between 0-255.

A generic button can be configured to send a fixed dimming value to a dimming circuit, for example sending the value 128 to make the light go to 50%.

Send KNX Float 2 Byte Telegram

This command is used to send a 2 byte float value to the KNX bus.

- **KNX Group** Group address to send the value.
- **KNX value** Can be a value between -671088,64 and 670760,96.

A generic button can be configured to send a fixed temperature value to a thermostat, for example sending the value 21.5 as a setpoint.

Send KNX Float 4 Byte Telegram

This command is used to send a 4 byte float value to the KNX bus.

- **KNX Group** Group address to send the value.
- **KNX value**

Send KNX String Telegram

This command is used to send a string of 14 bytes to the KNX bus.

- **KNX Group** Group address to send the value.
- **KNX value** string text to be entered.

Send KNX 4 Bit Telegram

This command is used to send a 4 bit value to the KNX bus.

- **KNX Group** Group address to send the value.
- **KNX value** Can be a value between 0 and 15.

A generic button can be configured to decrease (value 0-7) or increase (value 8-15) a light dimming value. It can also be used to change a shutter position (use values 0-7 for UP, and 8-15 for DOWN). For example, sending the value 5 to a dimmer will decrease the brightness by 6%, while sending the value 10 to a shutter will lower its position by 50%.

[Read KNX group address](#)

This command is used to read a value from the KNX bus.

- **KNX Group** Group address to read the value from.

[Make a pause for a fixed interval](#)

This command pauses the system for a specified time interval configurable in milliseconds.

- **Interval** Time interval in milliseconds.

When saving a scene, sometimes a pause between two commands is necessary, for example, when saving the TV channel number. Another use of the Pause application would be before turning off the final light in a Goodbye scene, making sure that the client has left the house.

[Change UI Function and Page: GENERAL](#)

This command allows to redirect **all clients** to a specific function and page.

- **Function** insert the Index number of the destination function.
- **Page** insert the Index number of the destination page.

Using the Universal Gateway, a scenario can be configured to redirect the users to the Main Entrance camera page whenever the doorbell rings.

[Change UI Function and Page: SPECIFIC CLIENT](#)

This command allows the **specific client** who has sent it to access a certain function and page.

- **Function** insert the Index number of the destination function.
- **Page** insert the Index number of the destination page.

Invisible generic buttons can be placed on the house plan for each room, allowing every single client to navigate through the rooms by clicking on each area.

[Send Push Notification](#)

This command allows to send push notifications to the clients. By accessing the web page of the server and clicking on Server -> Licenses and Codes, it is possible to enable/disable the receipt of push notifications for each client.

- **Message** insert the message to be displayed on the clients.
- **Maximum number of push notifications with the same identifier allowed in 10 min**
This parameter is not mandatory. However, if a value has been entered, the system will make sure to limit the number of push notifications sent to this number in 10 min. It is quite useful when the trigger for sending the push notifications is being sent frequently on the bus.
- **Push Notification Identifier** A small descriptive text to allow the system to differentiate a push notification from another one when calculating the rate limit. Mandatory only if the previous parameter has been used.

Using the Universal Gateway, a push notification can be sent to the client when a 1-bit value is received from the bus to indicate that the Water Tank Level is low. The message in that case can be "Low Water Level!". If the 1-bit is being sent periodically to the bus with a small interval, then a maximum number of push notifications can be inserted in the related parameter.



Push notifications only work with internet connectivity. In addition, the server and client should both have the same version of Thinknx software (both Classic or Thinknx UP).

Execute MS Windows Command: GENERAL

This command allows to launch an .exe file directly from the ThinKnx application on all Players for Windows.

- **Command**
- **Parameter**

Execute MS Windows Command: SPECIFIC CLIENT

This command allows to launch an .exe file directly from the ThinKnx application on all Players for Windows.

- **Command**
- **Parameter**

Recall iOS app with url

This property allows to launch a specific application on iOS devices directly from the ThinKnx app by typing the related URL.

- **URL used to recall iOS app** Type in the correct URL to open the desired installed application, for example <http://www.google.com> will automatically browse the google safari page. Another

example is typing sonos:// to open the SONOS app.

A generic button can be configured for the client to open another application on the iOS device.

Send Email to recipients

This command allows to send an email message using a default ThinkKnx account.

- **Email Subject** Enter the email title here.
- **Email Recipients** Enter destination email accounts.
- **Email Content** Enter the email content here.

If the client's house is empty and a presence has been detected inside (1-bit KNX telegram), a scenario can be programmed on the Universal Gateway to send an email to the owner of the house.

This command might not work properly. Instead, add an Email Account under System tab, and select the command "send email to recipient" that can be found in the Internal Services. See [this section](#) for more information.

Send DTMF tone during intercom call

This command allows to send a DTMF tone used in telephony while an intercom call is running on the client.

- **DTMF tones sequence** enter the sequence of numbers to send during the intercom call. Sometimes it is necessary to end the sequence with the symbol "#", depending on the application.

A generic button can be configured in the Intercom page to send a DTMF tone to open the main gate whenever a call is established.

Make SIP call

When using the Thinkknx server as PBX, it is possible to make internal calls between all the devices.

- **Extension to call** Enter the extension of the destination device.

A house owner can have a generic button on his application to call the extension of the touch screen installed in Kitchen to communication with the help.

Start audio notification sound in all the clients

This command allows to play an audio sound in all the clients.

- **Sound to play** Choose between different beeps to play: 0=Beep_1, 1=Beep_2, 2=Alarm_1, 3==Alarm_2, 4=Siren_1, 5=Siren_2.
- **Duration of the sound to play** Specify the duration of the sound to play in seconds. If 0 is

entered, the sound will play endlessly until a Stop command has been sent.

An emergency push button can be installed in bathrooms to send a KNX 1-bit value. Using the Universal Gateway, this value received can launch the command to start audio notification on all clients.

Stop audio notification sound in all clients

This command allows to stop the audio sound previously launched in all clients. See above command for example.

Reports and Gateways

The list below contains all the possible objects that could be added to the Reports and Gateways category:

- [Gateway Modbus](#)
- [Lutron Project](#)
- [Serial Gateway](#)
- [Ethernet Gateway](#)
- [Gateway MyHome](#)
- [Voice Control Gateway](#)
- [IFTTT Account](#)
- [SMS Gateway](#)

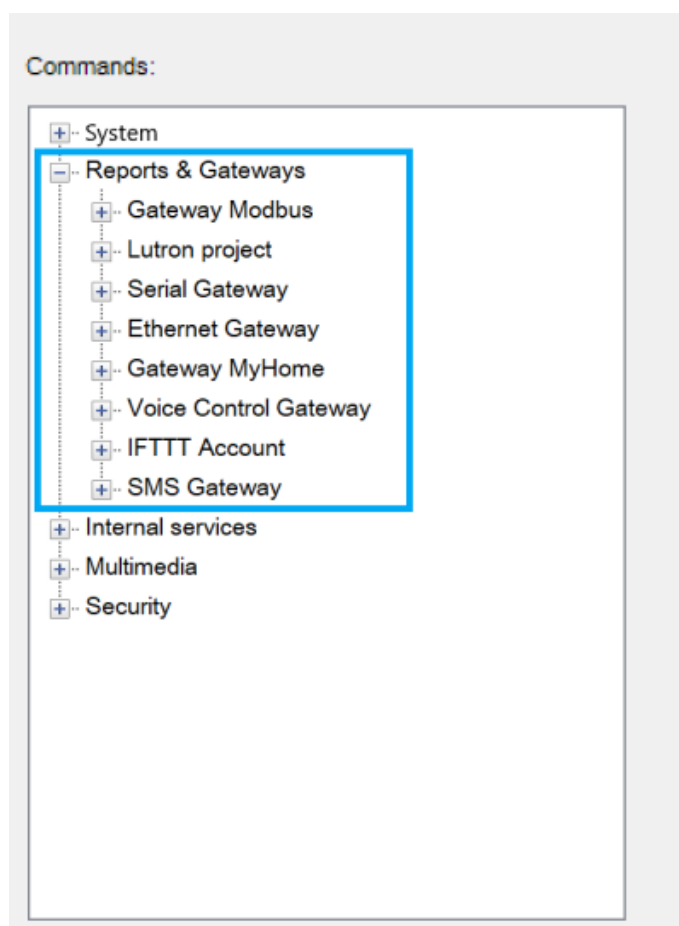


Figure 2: Reports and Gateways

Gateway Modbus

The available commands when selecting the **Gateway Modbus** category under **Reports and Gateways** are the following:

Send Modbus value with function 5

This function is used to send a value to a Modbus device supporting function 5, known as “write single coil”.

- **Modbus address** Modbus address.
- **Coil Address** Discrete output address (coils are 1-bit registers).
- **Value** could be 1 or 0.

Send Modbus value with function 6

This function is used to send a value to a Modbus device supporting function 6, known as “Write Single Holding Register”.

- **Modbus Address** Modbus address.
- **Register Address** Slave register.
- **Value** value to write.
- **N.Byte** Number of bytes.

Send Modbus value with function 16

This function is used to send a value to a Modbus device supporting function 16, known as “Write Multiple Holding Registers”.

- **Modbus Address** Modbus address.
- **First Register Address** Slave register.
- **Value** value to write.
- **N.Byte** Number of bytes.

Send Modbus value with function 22

This function is used to send a value to a Modbus device supporting function 22. The function can be used to set or clear individual bits in the register.

- **Modbus Address** Modbus address.
- **Register Address** Slave register.
- **Value** value to write.
- **Selected bits mask** mask value of the selected bits to be changed.

Lutron Project

The available commands when selecting the **Lutron Project** category under **Reports and Gateways** are the following:

[Simulate keypad button press](#)

This command is used to simulate a keypad button press on one of the Lutron devices installed.

- **System address of the keypad** Address of the keypad with the desired button to simulate. Communication is done by connecting to the Lutron processor. Address shall be written using the following template "processor:link:address".
- **Button number to operate** Number of the button to press on the Lutron keypad.

[Simulate keypad button release](#)

This command is used to simulate a keypad button release on one of the Lutron devices installed.

- **System address of the keypad** Address of the keypad with the desired button to simulate. Communication is done by connecting to the Lutron processor. Address shall be written using the following template "processor:link:address".
- **Button number to operate** Number of the button to release on the Lutron keypad.

[Simulate keypad button hold](#)

This command is used to simulate a keypad button hold on one of the Lutron devices installed.

- **System address of the keypad** Address of the keypad with the desired button to simulate. Communication is done by connecting to the Lutron processor. Address shall be written using the following template "processor:link:address".
- **Button number to operate** Number of the button to hold on the Lutron keypad.

[Simulate keypad button double tap](#)

This command is used to simulate a keypad button double tap on one of the Lutron devices installed.

- **System address of the keypad** Address of the keypad with the desired button to simulate. Communication is done by connecting to the Lutron processor. Address shall be written using the following template "processor:link:address".
- **Button number to operate** Number of the button to double tap on the Lutron keypad.

[Select Sivoia state](#)

This command is used to control Lutron shutters/blinds through a Sivoia control device.

- **System address of Sivoia Control** Address of the Sivoia Control device. Communication is done by connecting to the Lutron processor. Address shall be written using the following template "processor:link:address".
- **Sivoia state to select** O=open, C=close, S=stop.

Select Grafik Eye scene

This command is used to play a scene configured with Lutron Grafik Eye system.

- **System address of Grafik Eye to control** Address of the Grafik Eye device. Communication is done by connecting to the Lutron processor. Address shall be written using the following template "processor:link:address".
- **Scene number to select** Input the scene number (0=OFF).

Select Level Lights

This command is used to send the lights to a certain level.

- **Output integration ID** ID of the output to control.
- **Level** Input a number between 0 and 255 to send the lighting level.

Select Raising Lights

This command is used to start raising the lighting level of the desired output.

- **Output integration ID** ID of the output to control.

Select Lowering Lights

This command is used to start lowering the lighting level of the desired output.

- **Output integration ID** ID of the output to control.

Stop Raising or Lowering Lights

This command is used to stop raising/lowering the lighting level of the desired output.

- **Output integration ID** ID of the output to control.

Serial Gateway

The available commands when selecting the **Serial Gateway** category under **Reports and Gateways** are the following:

Send string with no termination

This command is used to send a text without termination.

- **String to send** input the string that will be sent to the serial gateway.

Send string with CR termination

This command is used when sending a text with CR termination, marking the end of the line.

- **String to send** input the string that will be sent to the serial gateway.

Send hexadecimal string with no termination

This command is used to send an hexadecimal string without termination.

- **String to send** input the string that will be sent to the serial gateway.

Send hexadecimal string with CR termination

This command is used when sending an hexadecimal string with CR termination, marking the end of the line.

- **String to send** input the string that will be sent to the serial gateway.

Ethernet Gateway

The available commands when selecting the **Ethernet Gateway** category under **Reports and Gateways** are the following:

Make an HTTP GET call to a specified url

This command allows the sending of an HTTP GET request to execute a command.

- **URL**
- **Timeout for connection** in milliseconds, default 3000 ms.

Make an HTTP GET call to a specified url with username and password

This command allows the sending of an HTTP GET request execute a command.

- **URL**
- **Username** used to authenticate to the server
- **Password** used to authenticate to the server
- **Timeout for connection** in milliseconds, default 3000 ms.

Make an HTTP POST call to a specified url

This command allows the sending of an HTTP POST request to send data to a certain sever in order to execute a command.

- **URL**
- **Content to send into call** multiple form fields and values can be sent via the same URL. The encoding used by default is based on an early version of the general URI percent-encoding rules, with a number of modifications such as newline normalization and replacing spaces with + instead of %20. The media type of data encoded this way is application/x-www-form-urlencoded.
- **Timeout for connection** in milliseconds, default 3000 ms.

Make an HTTP POST call to a specified url with username and password

This command allows the sending of an HTTP POST request to send data to a certain sever in order to execute a command. The server in this case requires a username and password.

- **URL**
- **Content to send into call** multiple form fields and values can be sent via the same URL. The encoding used by default is based on an early version of the general URI percent-encoding rules, with a number of modifications such as newline normalization and replacing spaces with + instead of %20. The media type of data encoded this way is application/x-www-form-urlencoded.
- **Username** used the authenticate to the server.
- **Password** used to authenticate to the server.
- **Timeout for connection** in milliseconds, default 3000 ms.

Send string with no termination to TCP socket

This command allows the sending of a string to a TCP host on a defined port.

- **String to send**
- **Host:port**
- **Timeout for connection** in milliseconds, default 3000 ms.
- **Time to wait before closing connection after data sending** in milliseconds, default 100 ms.

Send string with CR termination to TCP socket

This command allows the sending of a string with CR termination, marking the end of the line, to a TCP host on a defined port.

- **String to send**
- **Host:port**
- **Timeout for connection** in milliseconds, default 3000 ms.
- **Time to wait before closing connection after data sending** in milliseconds, default 100 ms.

Send hexadecimal string with no termination to TCP socket

This command allows the sending of an hexadecimal string to a TCP host on a defined port.

- **String to send**
- **Host:port**
- **Timeout for connection** in milliseconds, default 3000 ms.
- **Time to wait before closing connection after data sending** in milliseconds, default 100 ms.

To send "hello world", it is enough to convert this ASCII text to HEX using a simple tool such as <https://www.rapidtables.com/convert/number/ascii-to-hex.html>, and the HEX string to send would be "68 65 6c 6c 6f 20 77 6f 72 6c 64".

Send hexadecimal string with CR termination to TCP socket

This command allows the sending of a string with CR termination, marking the end of the line, to a TCP host on a defined port.

- **String to send**
- **Host:port**
- **Timeout for connection** in milliseconds, default 3000 ms.
- **Time to wait before closing connection after data sending** in milliseconds, default 100 ms.

To send "hello world", it is enough to convert this ASCII text to HEX using a simple tool such as <https://www.rapidtables.com/convert/number/ascii-to-hex.html>, and the HEX string to send would be "68 65 6c 6c 6f 20 77 6f 72 6c 64".

Send string with no termination to UDP socket

This command allows the sending of an hexadecimal string to a UDP host on a defined port.

- **String to send**
- **Host:port**
- **Timeout for connection** in milliseconds, default 3000 ms.
- **Time to wait before closing connection after data sending** in milliseconds, default 100 ms.

Send string with CR termination to UDP socket

This command allows the sending of a string with CR termination, marking the end of the line, to a UDP host on a defined port.

- **String to send**
- **Host:port**
- **Timeout for connection** in milliseconds, default 3000 ms.
- **Time to wait before closing connection after data sending** in milliseconds, default 100 ms.

Send hexadecimal string with no termination to UDP socket

This command allows the sending of an hexadecimal string to a UDP host on a defined port.

- **String to send**
- **Host:port**
- **Timeout for connection** in milliseconds, default 3000 ms.
- **Time to wait before closing connection after data sending** in milliseconds, default 100 ms.

To send "hello world", it is enough to convert this ASCII text to HEX using a simple tool such as <https://www.rapidtables.com/convert/number/ascii-to-hex.html>, and the HEX string to send would be "68 65 6c 6c 6f 20 77 6f 72 6c 64".

Send hexadecimal string with CR termination to UDP socket

This command allows the sending of a string with CR termination, marking the end of the line, to a UDP host on a defined port.

- **String to send**
- **Host:port**
- **Timeout for connection** in milliseconds, default 3000 ms.
- **Time to wait before closing connection after data sending** in milliseconds, default 100 ms.

To send "hello world", it is enough to convert this ASCII text to HEX using a simple tool such as <https://www.rapidtables.com/convert/number/ascii-to-hex.html>, and the HEX string to send would be "68 65 6c 6c 6f 20 77 6f 72 6c 64".

Send hexadecimal string with no termination to UDP socket in multicast

This command allows the sending of an hexadecimal string to a UDP host supporting multicast on a defined port. The characters should be separated by a space.

- **String to send**
- **Host:port**
- **Timeout for connection** in milliseconds, default 3000 ms.
- **Time to wait before closing connection after data sending** in milliseconds, default 100 ms.

To send "hello world", it is enough to convert this ASCII text to HEX using a simple tool such as <https://www.rapidtables.com/convert/number/ascii-to-hex.html>, and the HEX string to send would be "68 65 6c 6c 6f 20 77 6f 72 6c 64".

Send hexadecimal string with CR termination to UDP socket in multicast

This command allows the sending of a string with CR termination, marking the end of the line, to a UDP host supporting multicast on a defined port.

- **String to send**

- **Host:port**
- **Timeout for connection** in milliseconds, default 3000 ms.
- **Time to wait before closing connection after data sending** in milliseconds, default 100 ms.

To send "hello world", it is enough to convert this ASCII text to HEX using a simple tool such as <https://www.rapidtables.com/convert/number/ascii-to-hex.html>, and the HEX string to send would be "68 65 6c 6c 6f 20 77 6f 72 6c 64".

[Send SOAP request to the specified url](#)

This command allows the sending of a SOAP (Simple Object Access Protocol) request to a URL. SOAP is an XML-based messaging protocol for exchanging information among computers.

- **URL**
- **SOAP Envelope** Defines the start and the end of the message. It is a mandatory element.
- **SOAP Action** indicates the intent of the SOAP HTTP request.

[Establish SSH session and send commands](#)

This command allows to establish an SSH session with a server to execute certain commands. Secure Socket Shell or SSH, is a network protocol that gives users, particularly system administrators, a secure way to access a computer over an unsecured network.

- **SSH server hostname**
- **SSH server port**
- **Username**
- **Password**
- **Commands to send** Commands must be enclosed in double quotes and separated by a space, example: "cmd one" "cmd two" "etc"

Application: This session can be used to connect to the home router/access point through Thinknx.

Gateway MyHome

The available commands when selecting the **Gateway MyHome** category under **Reports and Gateways** are the following:

[Launch a scenario](#)

This command allows launching of a scenario configured on the MyHome system.

- **Scenario Number** as configured in MyHome.
- **Control Panel**
- **Interface (I)**

[Lights: point to point control ON/OFF](#)

This command allows to send an ON or OFF command to one lighting point.

- **Room (A)** as configured in MyHome.
- **Light Point (PL)**
- **Interface (I)**
- **ON/OFF** type 0 to turn off and 1 to turn on.

Lights: point to point control DIMMER

This command allows to send a dimming value to one dimmer.

- **Room (A)** as configured in MyHome.
- **Light Point (PL)**
- **Interface (I)**
- **Dimmer Level** type a value between 0 and 255 for dimmer's level.

Lights: point to point control TIMED

This command allows to send an ON value duration for one light point.

- **Room (A)** as configured in MyHome.
- **Light Point (PL)**
- **Interface (I)**
- **ON timed for (min)** the values can be 0.5, 1, 2, 3, 4,5, or 15 min.

Lights: control for room ON/OFF

This command allows to send an ON or OFF command to an entire room.

- **Room (A)** as configured in MyHome.
- **Interface (I)**
- **ON/OFF** type 0 to turn off and 1 to turn on.

Lights: control for room TIMED

This command allows to send an ON value duration for an entire room.

- **Room (A)** as configured in MyHome.
- **Interface (I)**
- **ON timed for (min)** the values can be 0.5, 1, 2, 3, 4,5, or 15 min.

Lights: control for group ON/OFF

This command allows to send an ON or OFF command to a group of lighting points.

- **Group** as configured in MyHome.

- **Interface (I)**
- **ON/OFF** type 0 to turn off and 1 to turn on.

Lights: control for group DIMMER

This command allows to send a dimming value to a group of lighting points.

- **Group** as configured in MyHome.
- **Interface (I)**
- **Dimmer Level** type a value between 0 and 255 for dimmer's level.

Lights: control for group TIMED

This command allows to send an ON value duration for a group of lighting points.

- **Group** as configured in MyHome.
- **Interface (I)**
- **ON timed for (min)** the values can be 0.5, 1, 2, 3, 4,5, or 15 min.

Lights: general control ON/OFF

This command allows to send an ON or OFF command to all lighting points.

- **ON/OFF** type 0 to turn off and 1 to turn on.

Lights: general control DIMMER

This command allows to send a dimming value to all lighting points.

- **Dimmer Level** type a value between 0 and 255 for dimmer's level.

Lights: general control TIMED

This command allows to send an ON value duration for all lighting points.

- **ON timed for (min)** the values can be 0.5, 1, 2, 3, 4,5, or 15 min.

Automation: point to point control

This command allows to control a single shutter by sending Up, Down or Stop.

- **Room (A)** as configured in MyHome.
- **Automation Point (PL)**
- **Interface (I)**
- **Stop/Up/Down** Stop=0, Up=1, Down=2.

Automation: control for group

This command allows to control a group of shutters by sending Up, Down or Stop.

- **Group** as configured in MyHome.
- **Interface (I)**
- **Stop/Up/Down** Stop=0, Up=1, Down=2.

Automation: control for room

This command allows to control all shutters in a single room.

- **Room** as configured in MyHome.
- **Interface (I)**
- **Stop/Up/Down** Stop=0, Up=1, Down=2.

Automation: general control

This command allows to control all shutters.

- **Stop/Up/Down** Stop=0, Up=1, Down=2.

Temperature Control: Setpoint

This command allows to change the setpoint in a zone.

- **Zone (ZA, ZB)** as configured in MyHome.
- **Temperature** type the value of the temperature in °C.

Temperature Control: enable or disable

This command allows to enable/disable the thermostat.

- **Zone (ZA, ZB)** as configured in MyHome.
- **Enable or disable** type 1 to enable and 0 to disable.

Sound: Control the volume

This command allows to control the volume of a speaker.

- **Room (A)** as configured in MyHome.
- **Loudspeaker (PF)**
- **Volume** the number must be between 0 and 255.

Sound: control a speaker ON/OFF

This command allows to turn a speaker on or off.

- **Room (A)** as configured in MyHome.
- **Loudspeaker (PF)**
- **ON/OFF** insert 1 to turn on and 0 to turn off.

Voice Control Gateway

The available commands when selecting the **Voice Control Gateway** category under **Reports and Gateways** are the following:

[Restart Homekit gateway](#)

This function is used to restart the Homekit gateway enabled from the server's web page.

IFTTT Account

The available commands when selecting the **IFTTT Account** category under **Reports and Gateways** are the following:

[Trigger an event with parameters](#)

This function is used to send a command from Thinknx to trigger an event configured on an IFTTT service. The service configured in this case requires certain values before execution.

- **Event identification** this identification should match the one entered on the IFTTT website.
- **Value to pass as ingredient 1** value 1 required by the service on IFTTT.
- **Value to pass as ingredient 2** value 2 required by the service on IFTTT.
- **Value to pass as ingredient 3** value 3 required by the service on IFTTT.

[Trigger an event](#)

This function is used to send a command from Thinknx to trigger an event configured on an IFTTT service.

- **Event identification** this identification should match the one entered on the IFTTT website.

SMS Gateway

The available commands when selecting the **SMS Gateway** category under **Reports and Gateways** are the following:

[Send SMS to numbers with text](#)

This function allows the sending of an SMS to multiple phone numbers.

- **SMS text content** message body.
- **Receivers phone numbers** use “ ; ” to indicate more receivers. Number should be international without leading + or 00.

Internal Services

The list below contains all the possible objects that could be added to the Internal Services category:

- [Scene](#)
- [Presence Simulator](#)
- [Chronothermostat](#)
- [Email Account](#)
- [Irrigation](#)
- [RGB](#)

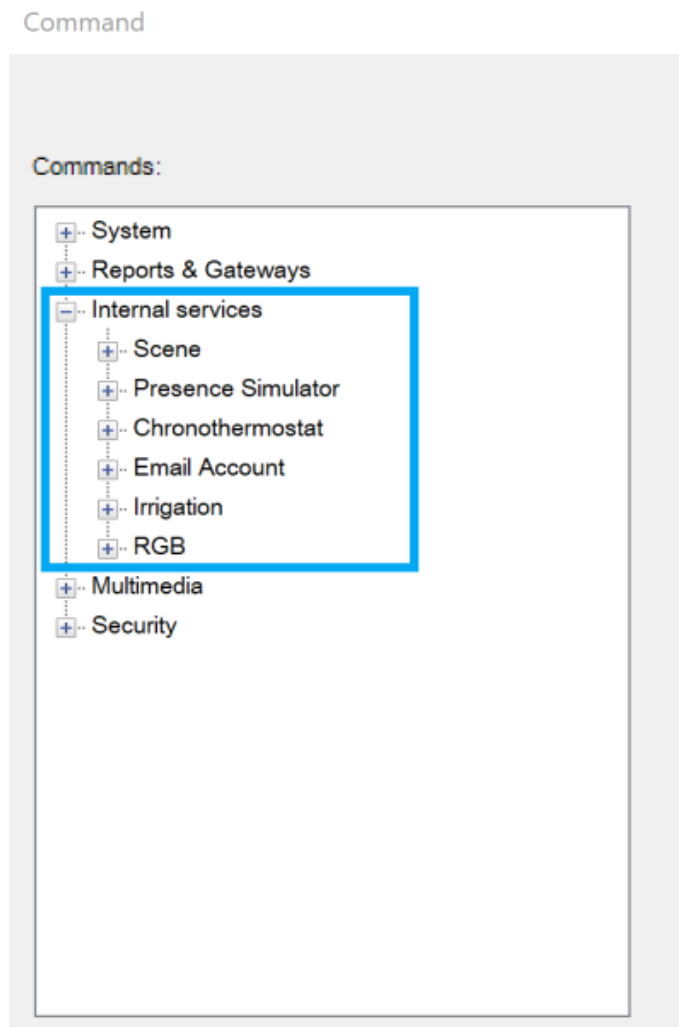


Figure 3: Internal Services

Scene

After selecting **Scene**, a list of all the added scenes in System will be shown. The available commands when selecting one of the scenes are the following:

[Launch scenery](#)

This command will allow to play the selected scene.

[Sop scenery execution](#)

This command will allow to stop a scene during execution.

Presence Simulator

The available commands after selecting **Presence Simulator** and opening the Simulator tree are the following:

[Start the presence simulation](#)

This command allows to start playing the presence simulation configured in the Presence Simulation object in System.

[Stop the presence simulation](#)

This command allows to stop playing the presence simulation configured in the Presence Simulation object in System.

Chronothermostat

After selecting **Chronothermostat**, a list of all the added chronothermostats in System will be shown. The available command when selecting one of the chronothermostats is the following:

[Enable/Disable the Chrono modality](#)

This command allows to activate/deactivate the control of the setpoint from the schedule configured by the client.

- **Enable/Disable** send 1 to enable and 0 to disable.

Email Account

After selecting **Email Account**, a list of all the email accounts created in System will be shown. The available command when selecting one of the accounts is the following:

[Send Email to recipients](#)

This command allows to send an email to a group of recipients.

- **Email subject**
- **Email recipients** separate the emails using " ; ".
- **Email content** body of the email.

Irrigation

The available command after selecting **Irrigation** and opening the “Chrono-Irrigation” is the following:

[Enable/Disable the Chrono modality](#)

This command allows to activate/deactivate the functioning of the irrigation zones from the schedule configured by the client.

RGB

After selecting **RGB**, a list of all the RGB objects added in System will be shown. The available commands when selecting one of the RGB objects are the following:

[Start RGB sequence shuffle with time in seconds](#)

This command allows to play a sequence of all the favorite colors in a shuffle mode, while defining the time to switch from one color to another.

- **Time** interval before switching to a new color, in seconds

[Start RGB sequence repeat with time in seconds](#)

This command allows to play a sequence of all the favorite colors in order and repeat them once done, while defining the time to switch from one color to another.

- **Time** interval before switching to a new color, in seconds

[Stop RGB sequence and turn OFF](#)

This command allows to stop an already launched sequence and turn off the RGB light.

[Save the current color to the selected preset position](#)

This command allows to save the current color to one of the available slots in Favorites.

- **Preset position** number of the slot where the color should be saved (value between 0-9).

[Recall the color previously saved to the selected preset position](#)

This command allows to switch the color of the RGB lights into the color saved in the requested slot below.

- **Preset position** number of the slot corresponding to the desired color (value between 0-9).

Multimedia

The list below contains all the possible objects that could be added to the Internal Services category:

- [Video Matrix](#)
- [Audio Matrix](#)
- [Display](#)
- [Home Theater](#)
- [Media Player](#)
- [Sonos Manager](#)
- [IR Transmitter](#)

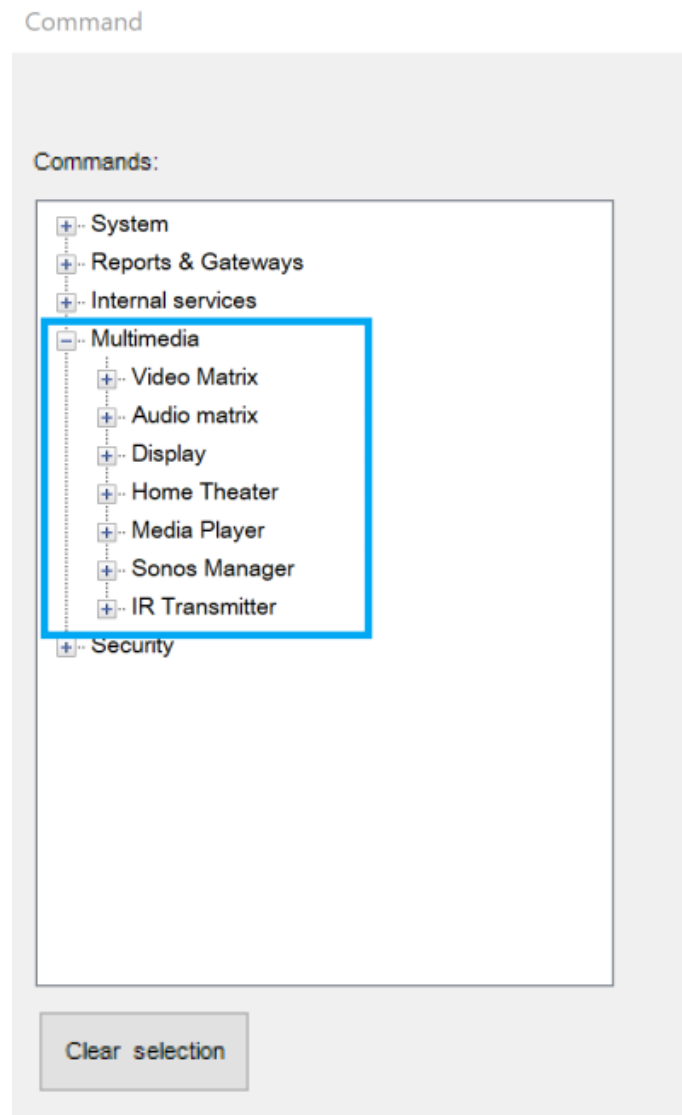


Figure 4: Multimedia

Video Matrix

After selecting **Video Matrix**, a list of all the video matrixes added in System will be shown. The available commands when selecting one of the matrixes are the following:

[Disconnect input for every output](#)

This command will disconnect all the inputs connected to the outputs.

Disconnect input for selected output

This command will disconnect the input connected to the desired output.

- **Output Number**

Set the selected input to the selected output

This command will allow to set the desired input to a selected output.

- **Input Number**
- **Output Number**

Audio Matrix

After selecting **Audio Matrix**, a list of all the audio matrixes added in System will be shown. The available commands when selecting one of the matrixes are the following:

Set the selected input of the selected output

This command will allow to set the desired input to one or more multiple outputs.

- **Input Number**
- **Output Number** use comma “,” to send to multiple outputs.

Disconnect input for every output

This command will allow to disconnect the inputs on all outputs.

Mute or unmute selected output

This command will allow to mute or unmute one or more outputs.

- **Output Number** use comma “,” to send to multiple outputs.
- **Mute Value** 1=muted, 0=unmuted.

Volume up selected output

This command will allow to raise the volume on the selected output. The volume is raised by 1.

- **Output Number** use comma “,” to send to multiple outputs.

Volume down selected output

This command will allow to lower the volume on the selected output. The volume is lowered by 1.

- **Output Number** use comma “,” to send to multiple outputs.

[Set volume for selected output](#)

This command will allow to set the a desired value to the volume on the selected output.

- **Output Number** use comma “,” to send to multiple outputs.
- **Volume** value between 0-100.

Display

After selecting **Display**, a list of all the displays added in System will be shown. The available commands when selecting one of the displays are the following:

[Set the TV channel number](#)

This command will allow to change the TV channel to the desired channel entered inside the parameter.

- **Channel Number**

[Set the video source](#)

This command will allow to set the video source on the TV.

- **Source Number**

[On or standby the device](#)

This command will allow to turn ON the TV or put it to Standby mode.

- **Power Value** 1=Power ON, 0=Standby.

[Set the audio volume](#)

This command will allow to send a value to the TV volume.

- **Volume Level** value between 0-100.

[Set the audio volume up](#)

This command will allow to raise the volume on the TV.

Set the audio volume down

This command will allow to lower the volume on the TV.

Home Theater

After selecting **Home Theater**, a list of all the home theater devices added in System will be shown. The available commands when selecting one of the devices are the following:



Depending on the brand of the Home Theater device selected in System, some commands may not be applicable.



The values entered inside the commands vary depending on the protocol specification for each brand.

Power On or Standby device

This command will allow to turn the device On or put it to Standby mode. The command is sent to each zone individually.

- **Subzone**
- **power value** this value varies depending on the Brand of the Home Theater device. For more information, contact support@thinknx.com.

Mute or unmute main output

This command will allow to mute or unmute the output on the selected subzone.

- **Subzone**
- **mute value** this value varies depending on the Brand of the Home Theater device. For more information, contact support@thinknx.com.

Volume up main output

This command will allow to raise the volume on the selected subzone.

- **Subzone**

Volume down main output

This command will allow to lower the volume on the selected subzone.

- **Subzone**

[Set volume for main output](#)

This command will allow to send a desired value to the output's volume.

- **Subzone**
- **Volume** value between 0-100.

[Bass up main output](#)

This command will allow to raise the bass on the output.

[Bass down main output](#)

This command will allow to lower the bass on the output.

[Treble up main output](#)

This command will allow to raise the treble on the output.

[Treble down main output](#)

This command will allow to lower the treble on the output.

[Enable or disable Subwoofer](#)

This command will allow to enable or disable the subwoofer.

- **Sub enable**

[Select source for main output](#)

This command will allow to set the desired source to the main output of the selected zone.

- **Subzone**
- **Main source**

[Select audio source for selected main source](#)

This command will allow to set the main audio source.

- **Subzone**
- **Main source audio**

Select video source for selected main source

This command will allow to set the main video source.

- **Subzone**
- **Main source video**

Read tuner frequency

This command will allow to get a feedback on the current tuner frequency.

Read tuner station

This command will allow to get a feedback on the current tuner station.

Tuner frequency up

This command will allow to raise the tuner frequency.

Tuner frequency down

This command will allow to lower the tuner frequency.

Tuner up

This command will allow to scan for the next tuner station.

Tuner down

This command will allow to scan for the previous tuner station.

Tuner auto search

This command will allow to launch the tuner auto search.

[Tuner stop search](#)

This command will allow to stop the tuner auto search.

[Select digital mode for main output](#)

This command will allow to select the digital mode on the device.

- **Digital Mode**

[Select surround mode for main output](#)

This command will allow to select the surround mode on the device.

- **Digital Mode**

[Remote setup menu show/hide](#)

This command will allow show/hide the on screen display menu for the remote.

- **OSD Setup** 1=show OSD menu, 0=hide OSD menu.

[Remote press cursor up](#)

This command will simulate the remote control command "Cursor Up".

[Remote press cursor down](#)

This command will simulate the remote control command "Cursor Down".

[Remote press cursor right](#)

This command will simulate the remote control command "Cursor Right".

[Remote press cursor left](#)

This command will simulate the remote control command "Cursor Left".

[Remote press Enter button](#)

This command will simulate the remote control button “Enter”.

Remote press Back/Return button

This command will simulate the remote control button “Back/Return”.

Remote press Option button

This command will simulate the remote control button “Option”.

Remote press Info button

This command will simulate the remote control button “Info”.

Send a custom command

This command will allow to send a customized command to the device.

- **Command to send to the device** refer to the Denon/Marantz protocol specification.

Sonos Manager

After selecting **Sonos Manager**, a list of all the players created in the System tab will be shown. The available commands when selecting one of the players are the following:

Put the device in PLAY state

This command will allow to play music on the selected player.

Put the device in STOP state

This command will allow to stop the music from playing on the selected player.

Volume up the device

This command will allow to raise the volume on the selected player.

Volume down the device

This command will allow to lower the volume on the selected player.

[Skip track forward](#)

This command will allow to play the next track.

[Skip track backward](#)

This command will allow to play the previous track.

[Set value for volume](#)

This command will allow to set the volume to a desired level.

- **Desired Volume** value between 0 and 100.

[Put the device in MUTE state](#)

This command will allow to mute/unmute the player.

- **Mute value** 1=unmuted, 0=muted.

[Play the audio from Audio IN plug](#)

This command will allow to play the music coming from the analog input of the player.

[Play the audio from another player Audio IN plug](#)

This command will allow to play the music coming from the analog input of another player player.

- **Zone player unique identifier** this identifier can be found when accessing the Sonos Manager in System and going to the Players collection.

[Play the audio from a network file](#)

This command will allow to play a shared file on the network using its URL.

- **File URL** should follow the form ://192.168.2.5/Music/abc.mp3

[Play the audio from a streaming](#)

This command will allow to play from a streaming URL.

- **Streaming URL** should follow the form ://myradiostream.com:800

Enable/Disable Repeat PlayMode

This command will enable/disable the repeat mode.

- **Repeat value** 1=enabled, 0-disabled.

Enable/Disable Shuffle PlayMode

This command will enable/disable the Shuffle mode.

- **Shuffle value** 1=enabled, 0-disabled.

Start a Playlist from its number

This command will start playing a desired playlist from its number.

- **Playlist number**

Start a Playlist from its name

This command will start playing a desired playlist from its name.

- **Playlist name**

Play a favorite item from its number

This command will start playing a desired item from the Favorite list.

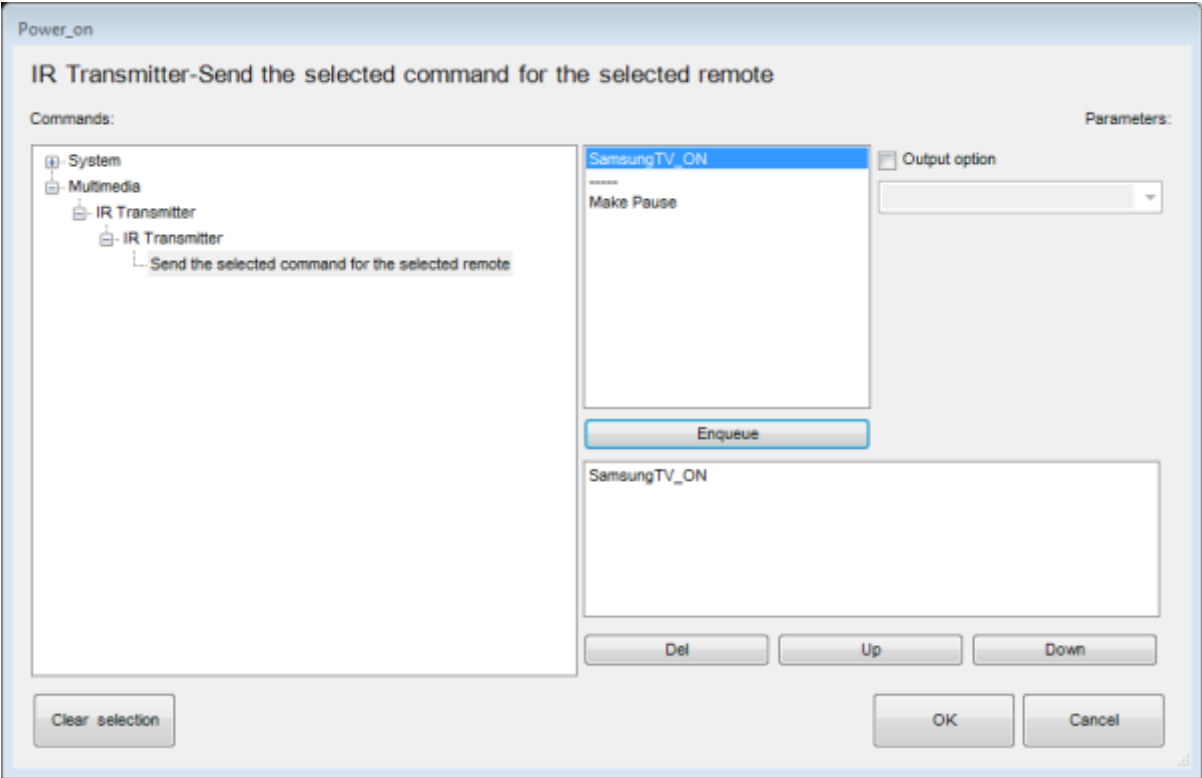
- **Favorite number**

IR Transmitter

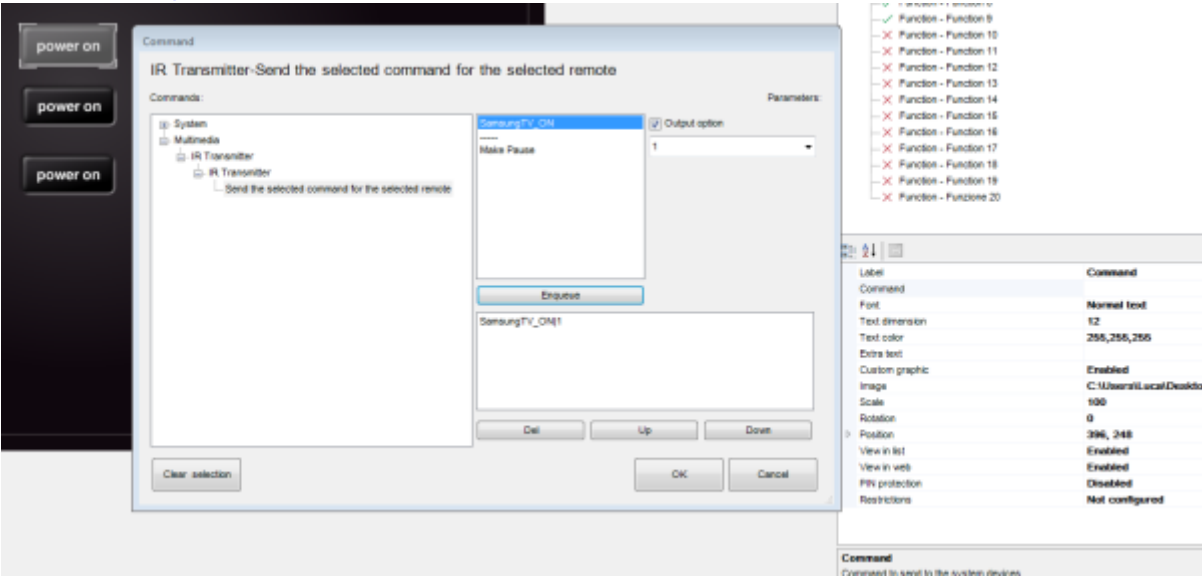
After selecting **IR Transmitter**, a list of all the transmitters created in the System tab will be shown. The available commands when selecting one of the transmitters are the following:

Send the selected command for the selected remote

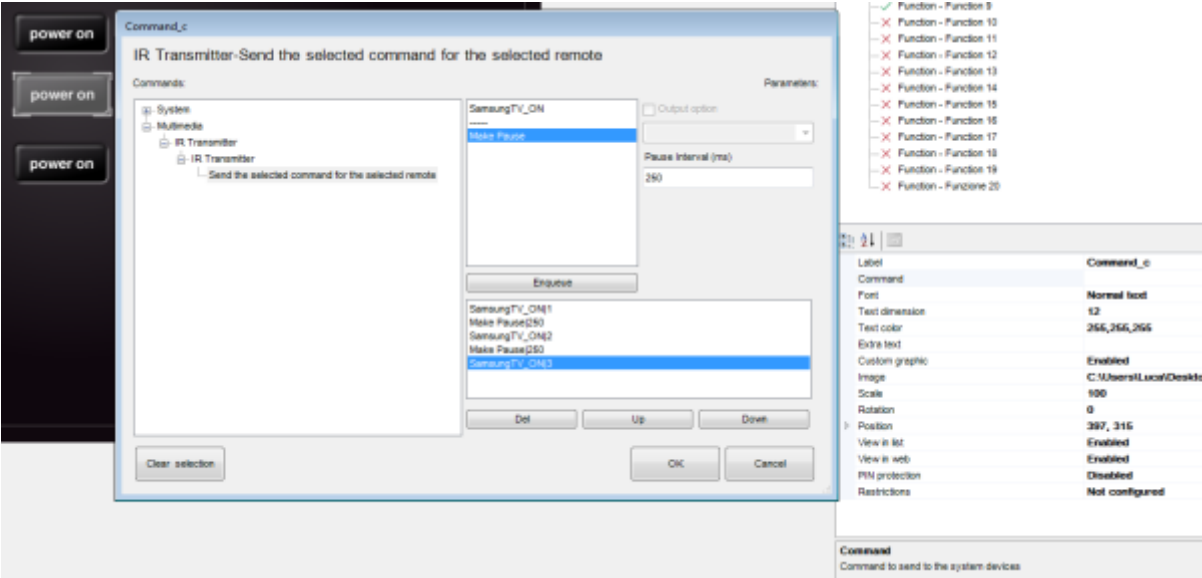
This command will allow to send an IR command by selecting it from the list to the right.



If you want to select a defined output different from the default one, before enqueueing the command, it is possible to enable the “Output option” and select the desired output from the list. The enqueue command will appear on the list of the commands to execute with an appended index corresponding to the selected output.



It is possible to create complex macro of IR operations simply enqueueing more commands. Commands can be separated by pause adding the “Make pause” item in order to grant a better reception. The sequence displayed in the box on the bottom of the page can be edited by deleting single items or moving them by clicking on “Up” and “Down” buttons.



Security

The list below contains all the possible objects that could be added to the Security category:

- Alarm Device
- Centrale

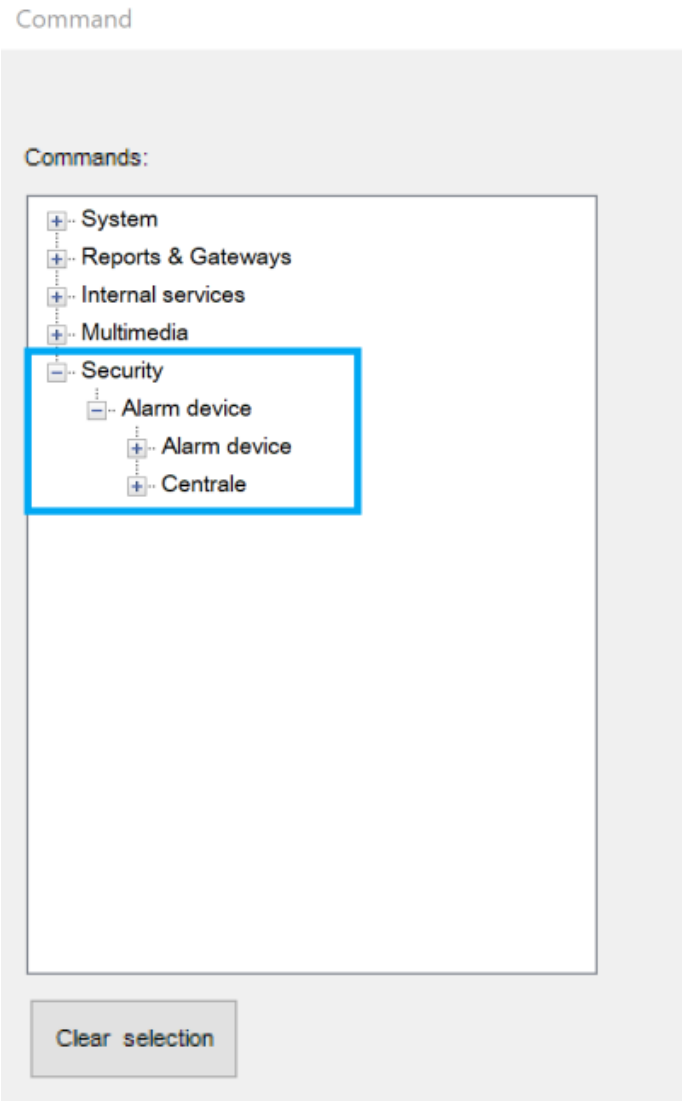


Figure 5: Security

Alarm Device

After selecting **Security**, a list of all the alarm devices and centrale added in System will be shown. The available commands when selecting one of the devices are the following:

Arm a particular partition with a specified code

This command will allow to arm one partition using its related pin code.

- **Partition Number**
- **Pin Code**

Disarm a particular partition with a specified code

This command will allow to disarm one partition using its related pin code.

- **Partition Number**
- **Pin Code**

Arm all partitions with a specified code

This command will allow to arm all partition using a common pin code.

- **Pin Code**

Disarm all partitions with a specified code

This command will allow to disarm all partition using a common pin code.

- **Pin Code**

Switch ON or OFF the specified output

This command will allow to control a particular output on the alarm system.

- **Number of the output to switch**
- **New /state of the output** ON=1, OFF=0.

Centrale

After selecting **Security**, a list of all the alarm devices and centrale added in System will be shown. The available commands when selecting one of the devices are the following:

Arm a particular partition with a specified code

This command will allow to arm one partition using its related pin code.

- **Partition Number**
- **Pin Code**

Disarm a particular partition with a specified code

This command will allow to disarm one partition using its related pin code.

- **Partition Number**
- **Pin Code**

Arm all partitions with a specified code

This command will allow to arm all partition using a common pin code.

- **Pin Code**

Disarm all partitions with a specified code

This command will allow to disarm all partition using a common pin code.

- **Pin Code**

Switch ON or OFF the specified output

This command will allow to control a particular output on the alarm system.

- **Number of the output to switch**
- **New /state of the output** ON=1, OFF=0.

From:

<http://www.thinknx.com/wiki/> - Learning Thinknx

Permanent link:

http://www.thinknx.com/wiki/doku.php?id=generic_commands&rev=1571678402

Last update: **2019/10/21 19:20**

