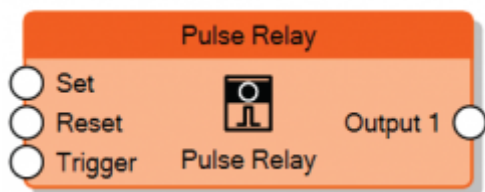
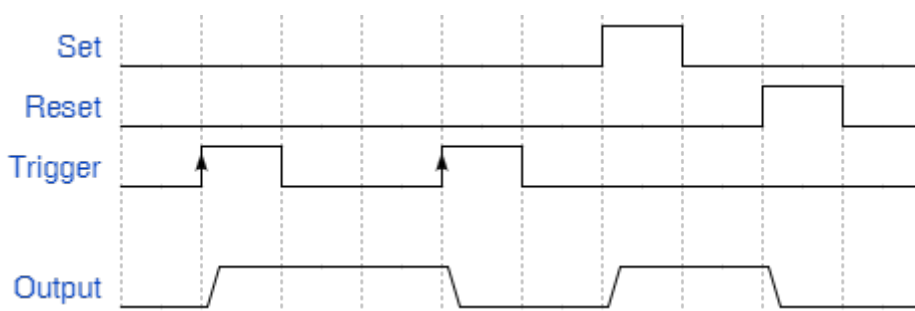


Pulse Relay




The Pulse Relay node sends 1 to the output when the input **Set** is set to 1 and sends 0 to the output when the input **Reset** is set to 1. When both Set and Reset are 0, the previous state of the output is maintained. Whenever the input **Trigger** receives a rising edge signal, Set and Reset are ignored and the output is toggled.

The **Behaviour** property determines whether Set or Reset must be dominant when both of them are 1.



Behavior of node when Set input is dominant

 The Pulse Relay it is used to transform a pulse input in a toggle switch!
Set and Reset inputs are optional, if they are not connected to any other nodes, the Trigger input is the only input which controls the output.

From: <http://www.thinknx.com/wiki/> - **Learning Thinknx**

Permanent link: http://www.thinknx.com/wiki/doku.php?id=lm_logic_prelay

Last update: **2019/03/20 17:04**

